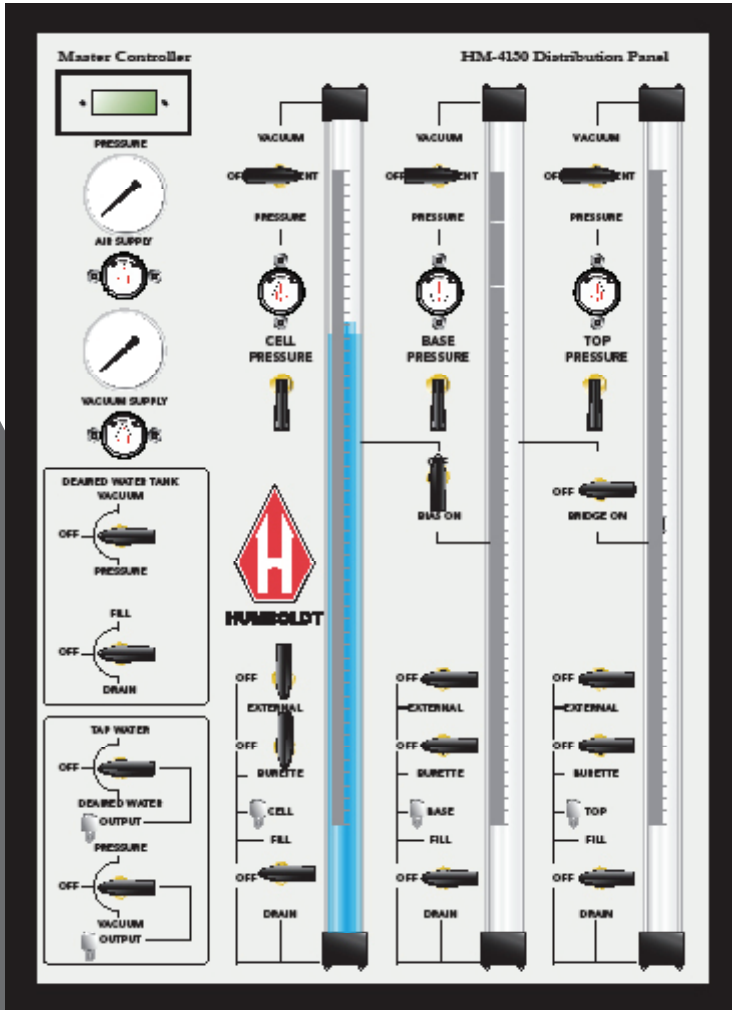
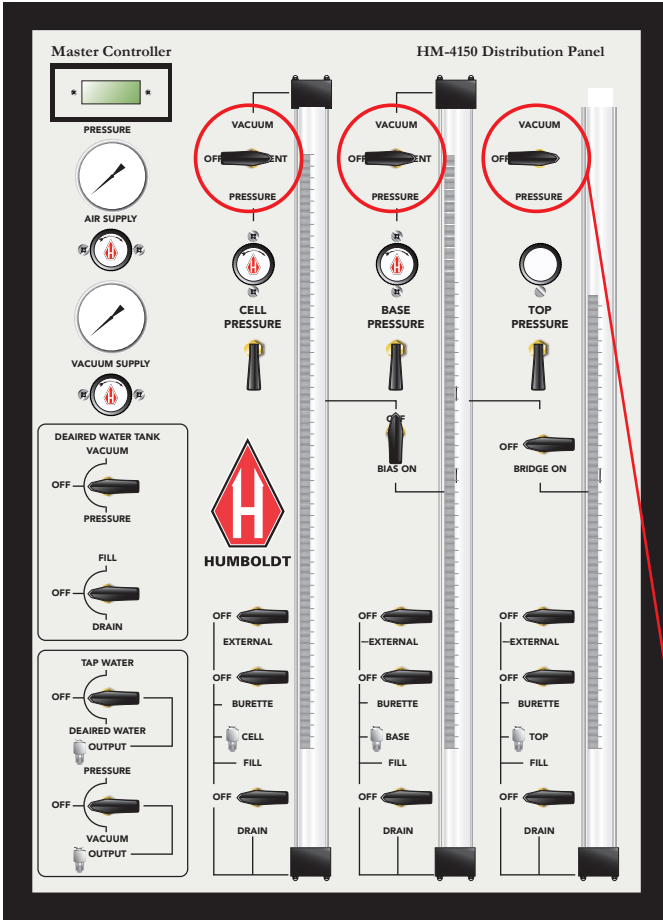


How to Fill the FlexPanel

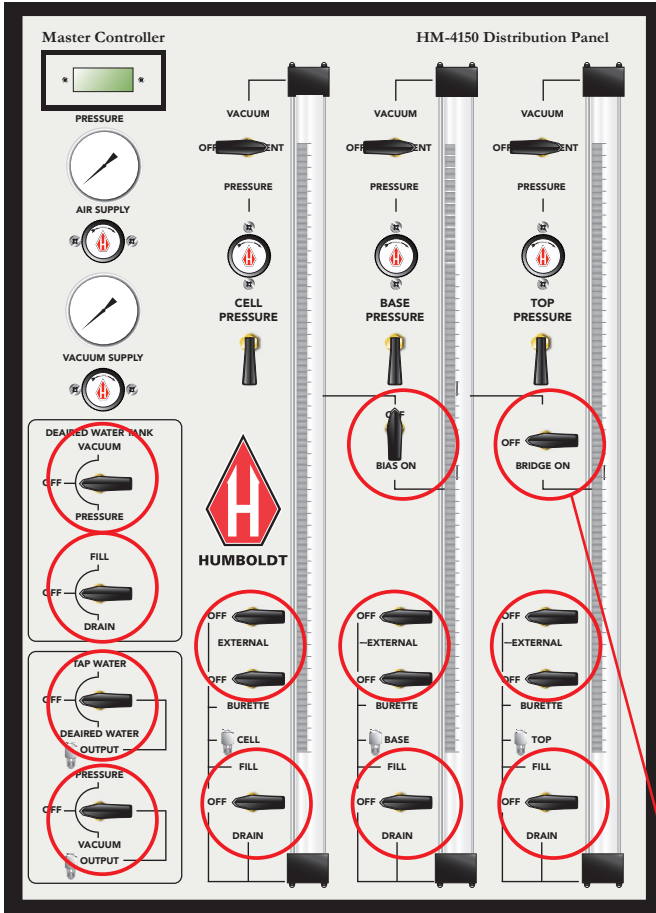




STEP 1

Turn all Pressure Valves to the Vent position.

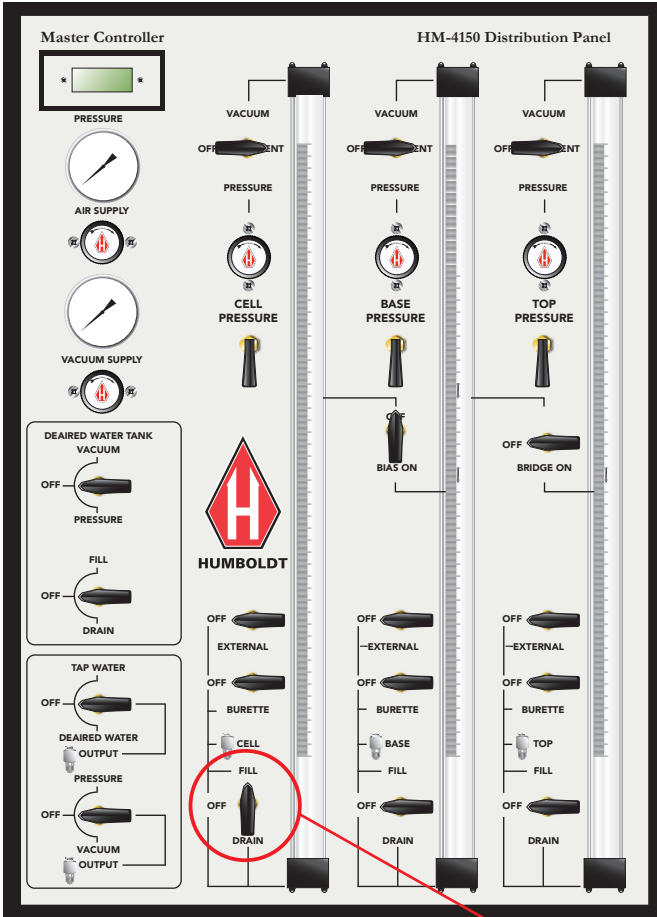
1



STEP 2

Turn all other Valves to the Off position.

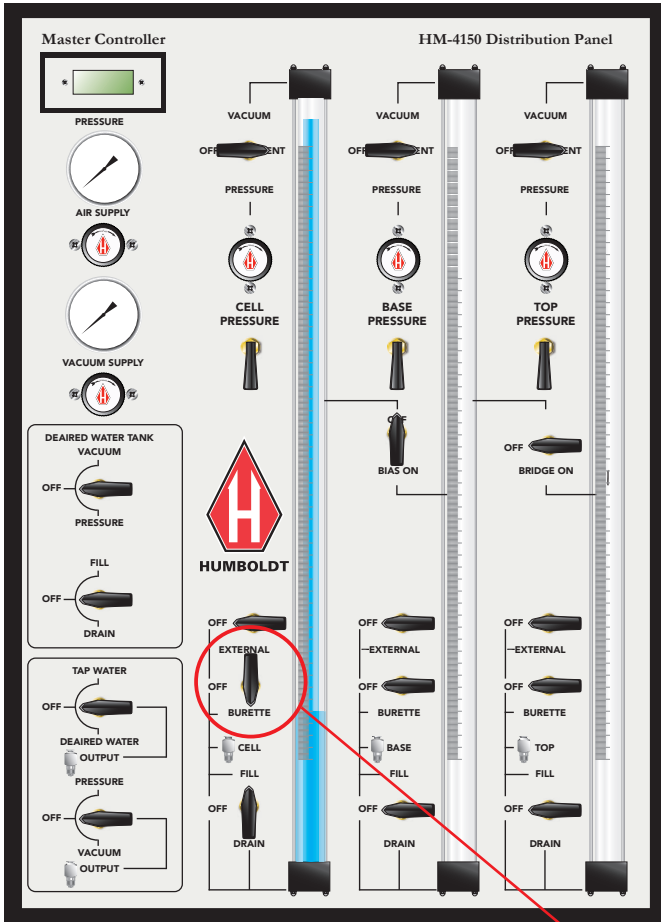
2



STEP 3

Turn the Valve Indicator to Fill.

3

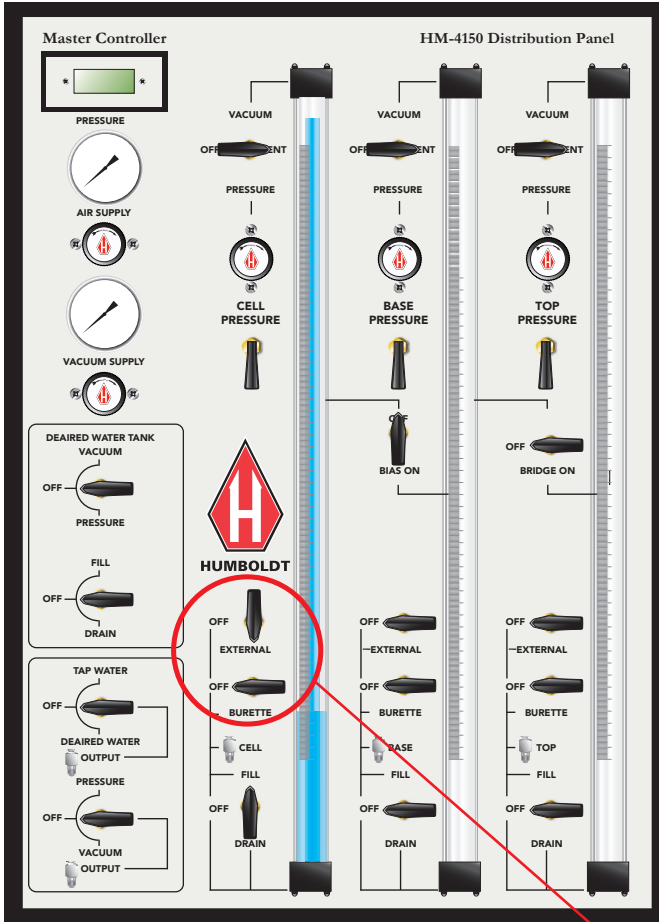


STEP 4

Turn the Burette Valve Indicator to the Fill position (BURETTE).

4

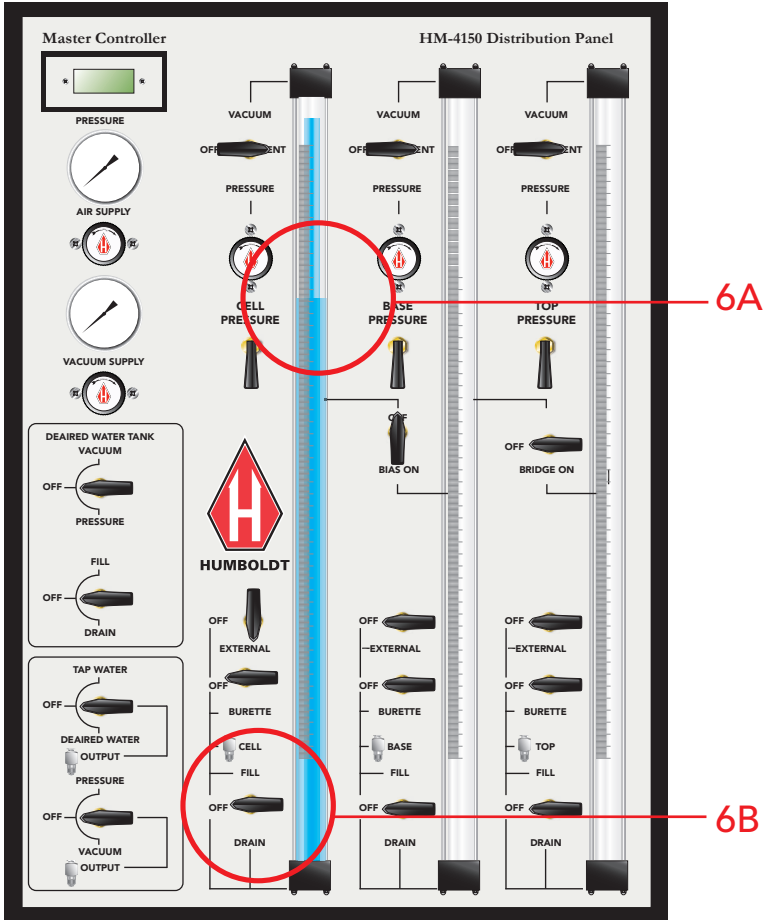
As the water level approaches the top of the Burette, continue filling the Burette until air bubbles are no longer evident in the Burette.



STEP 5

Turn the Burette Valve Indicator to the Off position and turn the External Valve Indicator to the On position (External).

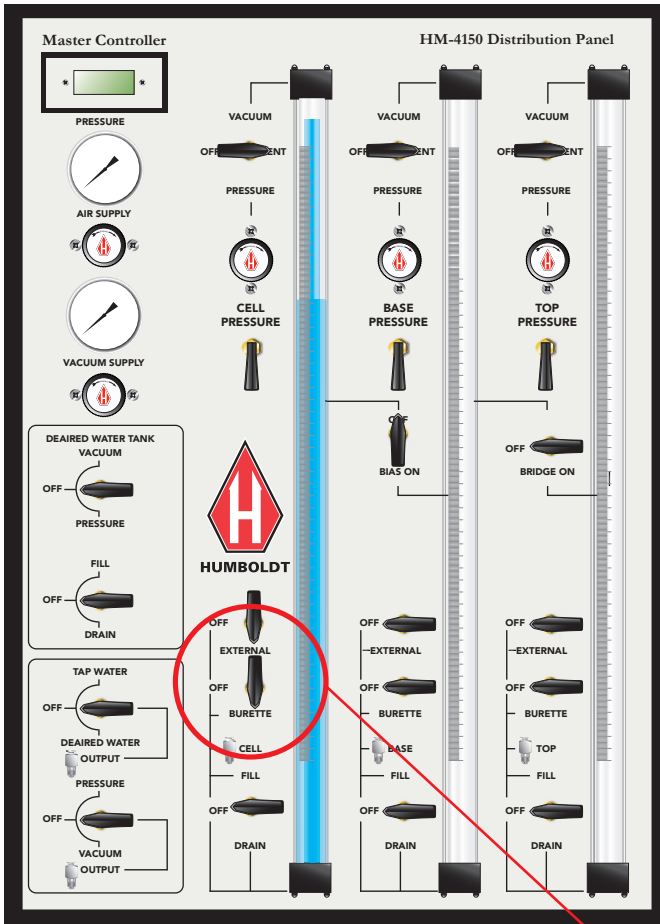
5



STEP 6

A. Slow the water flow rate of the External Tube as the water level approaches this level.

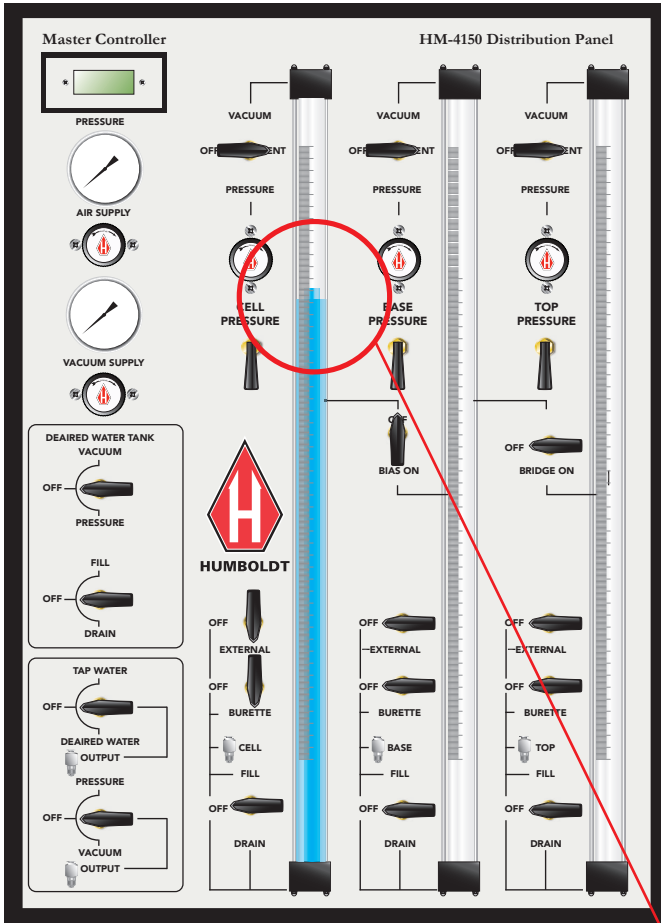
B. Then, turn the Fill Valve indicator to OFF position.



STEP 7

Turn the Burette Valve Indicator to the Burette Position.

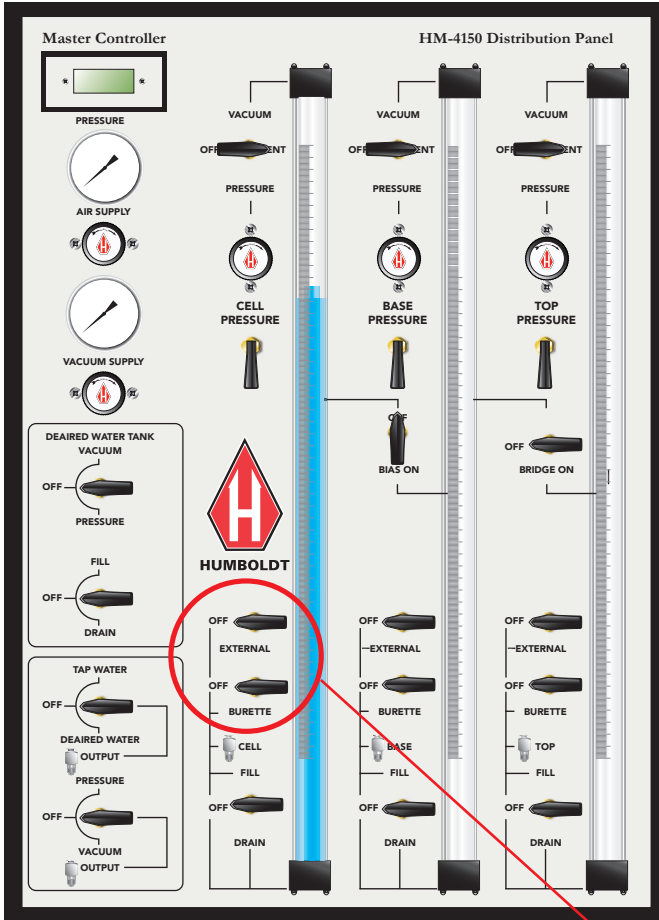
7



STEP 8

The water level in the Burette will adjust to the water level in the External Tube.

8



STEP 9

Turn the External and Burette Valve Indicators to OFF position.

9

Repeat this process (steps 3 through 9) to all the Base and Top Burette Assemblies.

COPYRIGHT NOTICE

©2018 HUMBOLDT Mfg. Co. All Rights Reserved. This manual or parts thereof may not be reproduced in any form without the expressed written permission of HUMBOLDT Mfg. Co.

UNPUBLISHED LICENSED PROPRIETARY WORK

©2016 HUMBOLDT Mfg. Co.

Humboldt Mfg. Co.
875 Tollgate Road
Elgin, Illinois 60123 U.S.A.

U.S.A. Toll Free: 1.800.544.7220
Voice: 1.708.456.6300
Fax: 1.708.456.0137
Email: hmc@humboldtmfg.com

