



# H-1334B & H-1334B.4F



Automatic  
Counter

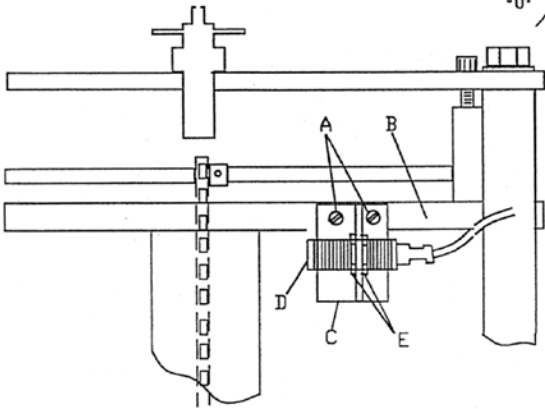
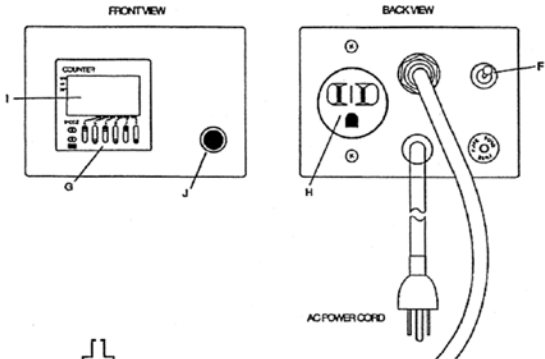
## General

The H-1334B is an automatic counter with 6-digit LCD readout for use with H-1336, H-1346, H-1356 mechanical compactors. It features a non-contact sensor to record a preset number of hammer blows and automatically shut-off the compactor when the preset number is reached. The main unit should be isolated from the compactor to avoid vibration damage. When used with H-1364 and H-1366 mechanical compactors, refer to those product manuals for information. Specify which compactor is being used when ordering.

## Operating Instructions

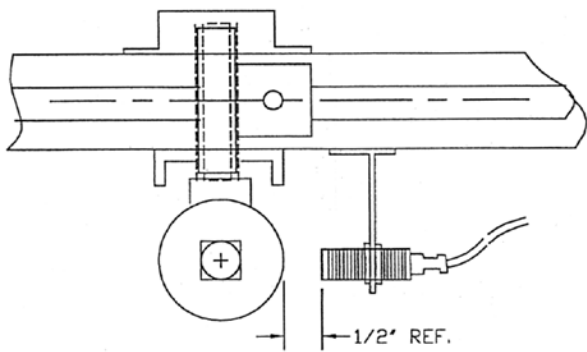
1. The diagram on the page 4 shows the two 6-32 screw holes "A" in the center crossbar marked "B".
2. The steel angle bracket marked "C" is mounted to the center crossbar "B" via the two 6-32 screws provided.
3. The proximity sensor switch "D" is inserted through the large hole in the bracket with a nut "E" on either side of the leg.
4. Lift the compactor hammer weight by hand. The hammer weight should pass approximately 1/2" from the end of the proximity switch.
5. Make sure both the 6-32 "A" screws and the proximity switch nuts "E" are securely locked into place.
6. We recommend that the control box be mounted on the wall behind the compactor or on an adjacent table.
7. Plug the power cord from the compactor into the back of the counter "H" and the power cord from the counter into a power socket (115V, 50/60Hz for H-1334B and 220V, 50/60 Hz for H-1334B.4F).
8. After all the cords are plugged into their respective sockets, switch the toggle switch "F" to the "ON" position, the display "I" should indicate "0" in the upper and lower rows. Use selector switches "G" to set the predetermining counter to the desired number of blows, which will appear in the lower display.
9. To begin a count cycle, push the black button "J". If the upper display indicates a value less than the preset count, it activates the motor.
10. The upper display will increment up to the preset count, one count each time the sensor input pulses the counter.
11. When the upper display indicates "the preset value", the motor will stop.
12. To begin another count cycle for the same preset, push the black button. Otherwise, change the preset as noted in step 8 and then press the black button.

**CAUTION:** Keep hands, clothing and other objects away from moving parts when the machine is in operation.



(FRONT VIEW)

DIGITAL COUNTER  
w/PROXIMITY SENSOR



(TOP VIEW)

REV. 1/14/05

**H-1334B**

## Warranty

Humboldt Mfg. Co. warrants its products to be free from defects in material or workmanship. The exclusive remedy for this warranty is Humboldt Mfg. Co., factory replacement of any part or parts of such product, for the warranty of this product please refer to Humboldt Mfg. Co. catalog on Terms and Conditions of Sale. The purchaser is responsible for the transportation charges. Humboldt Mfg. Co. shall not be responsible under this warranty if the goods have been improperly maintained, installed, operated or the goods have been altered or modified so as to adversely affect the operation, use performance or durability or so as to change their intended use. The Humboldt Mfg. Co. liability under the warranty contained in this clause is limited to the repair or replacement of defective goods and making good, defective workmanship.

### **Humboldt Mfg. Co.**

3801 North 25th Avenue  
Schiller Park, Illinois 60176 U.S.A.

U.S.A. Toll Free: 1.800.544.7220

Voice: 1.708.456.6300

Fax: 1.708.456.0137

Email: [hmc@humboldtmgf.com](mailto:hmc@humboldtmgf.com)

Testing Equipment for



Construction Materials

# HUMBOLDT

[www.humboldtmgf.com](http://www.humboldtmgf.com)