



# TERRATEST 3000 GPS

the most intelligent Light Weight Deflectometer



TERRATEST GmbH  
Dianastraße 4 · 16565 Lehnitz / Berlin  
Phone: 0 33 01 700 700 · Fax: 0 33 01 55 44 0  
[www.terratest.de](http://www.terratest.de) · [info@terratest.de](mailto:info@terratest.de)

LIGHT WEIGHT DEFLECTOMETER



## The Cost-Saving Alternative compared to the time and money consuming static plate load test

Testing compaction on construction sites - do it yourself and save real money! Easy handling and the little effort and costs involved in the procedure make compaction testing with the Light Weight Deflectometer **TERRATEST 3000 GPS** the optimal test method for earthworks, road construction, pipeline and cable work, gardening and landscaping as well as railway track construction. It is the cost-saving alternative to the time and money consuming static plate load test. Find out in less than two minutes if the required bearing capacity has been reached or if further compaction work is needed. Save real money on your construction project through accurate control of the compaction work!

## **TERRATEST 3000 GPS** corresponding to international standards



**TERRATEST 3000 GPS** is the most intelligent compact design Light Weight Deflectometer in the world. It comes with extensive technical equipment. The device is fully suitable for daily use on construction sites. A large inspection window and external control buttons enable working with a closed box, protecting the measurement electronics against dust and sand.

**TERRATEST 3000 GPS** conforms to the international standard ASTM E2835-11, published by ASTM International, an international standards organization, headquartered in the US. It is officially approved for compaction testing in Germany and Austria. The German national railway company Deutsche Bahn has also officially accepted compaction tests with Light Weight Deflectometers under standard RIL 836 for track construction.





## All-inclusive Set "ROBUSTA"

High-quality manufacture, extensive equipment

Everything  
you need included!

- ✓ Fully equipped Light Weight Deflectometer
- ✓ Weatherproof box with external control buttons, protecting the test computer on site
- ✓ GPS system with display in satellite picture
- ✓ Integrated printer for immediate printout
- ✓ Test saving on chip card
- ✓ Internal Memory
- ✓ Text Input Function
- ✓ High-performance rechargeable battery
- ✓ PC-software for evaluation and management of measured data
- ✓ TÜV-certified

# TERRATEST 3000 GPS

High-quality manufacture, proven its worth more than 1000 times

## Mechanical System

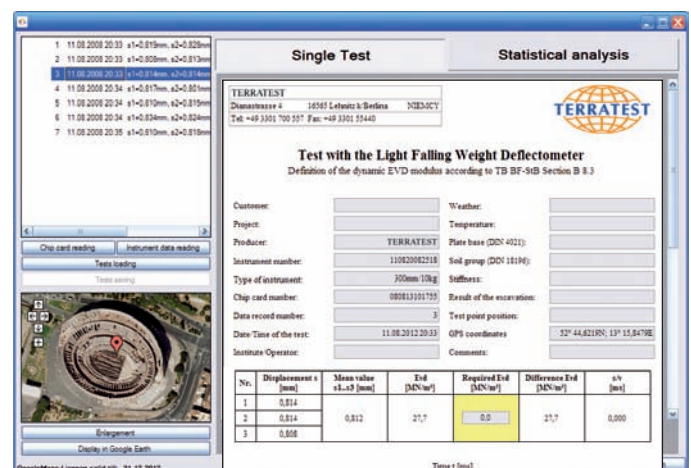
- Loading device with 10kg drop weight  
measurement range  $E_{vd}$  15-70 MN/m<sup>2</sup> (equals  $E_{v2}$  up to ca. 140 MN/m<sup>2</sup>)
- Load plate 300 mm with precision accelerometer
- Angled design load plate handles for mobile testing system "CARRELLO"
- Ergonomic hexangular weight-catching grip for comfortable handling on the construction site
- Safety grip with integrated spirit level, tightly screwed to the guide rod
- Electroless nickel coating, especially suitable for construction sites,  
since largely resistant to alkaline constituents in lime, cement, concrete etc.
- The only TÜV-certified device

**The only one with  
TÜV-certificate**



## Testing Computer

- Protected testing computer in weatherproof box "ROBUSTA"  
with large impact resistant inspection window and external control buttons.  
The operation of the device is thus also possible with the cover closed, so  
that the testing computer remains protected against dust, dirt and rain  
while working on the construction site.
- Integrated GPS system for immediate calculation of test position  
GPS system can be turned off
- Saving on chip card for convenient data transfer to the PC
- Text input function
- Illuminated graphic display for illustration of  
settlement curves, s/v value and  $E_{vd}$ -value
- High-performance rechargeable battery  
with extremely long service life
- TÜV-certified, conforming to protection class IP53
- Internal memory, PC interface for USB
- Charger 100-240 V input voltages  
as well as car charger
- USB data transfer cable  
for reading out the internal memory via the PC
- Switchable to 15 kg loading device



## Software

- Software „TERRATEST“ for Windows 2000, XP, Vista, Windows 7 on CD ROM
- Presentation of testing points with  $E_{vd}$ -value, date and time in satellite picture (can be turned off)
- Individual data records with user-designed company logo and color coded settlement curves in A4 format
- Statistical analysis of the test in accordance with German standard TP BF StB Part B8.3
- Detailed English user guide
- Information cards: Quick Start Guide, Rules for Proper Use, Correlation static/dynamic, Chart  $E_{v2}$ - $E_{vd}$ -minimum requirements according to German standard ZTV E







## Fully equipped “TERRATEST 3000 GPS”

Certified quality, MADE IN GERMANY

- ✓ Light Weight Deflectometer “TERRATEST 3000 GPS” corresponding to international standard ASTM E2835-11
- ✓ Measurement electronics in weatherproof box with large inspection window and external buttons (extremely suitable for use on site), TÜV protection class IP 53
- ✓ GPS system with display of testing points in satellite picture
- ✓ Internal printer for printout on site
- ✓ Test saving on chip card for transfer of data to PC
- ✓ High-performance rechargeable battery
- ✓ Software for evaluation of measured data



Made in Germany

**The only one with  
TÜV-certificate**



10kg Loading Device  
for measuring Evd 15-70 MN/m<sup>2</sup>

10kg  
Evd =  
15-70 MN/m<sup>2</sup>



15kg Loading Device  
for measuring Evd 70-120 MN/m<sup>2</sup>

15kg  
Evd =  
70-120 MN/m<sup>2</sup>



Testing system "CARRELLO"  
the comfortable fork system



Transport Box "MILANO"  
for transport of 10 kg device



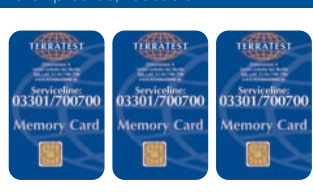
Transport Box "ROMA"  
for transport of 10 kg and 15 kg device



Magnet Plate "TRETMINÉ"  
for placing on the ground



Chip Card Set  
3 chip cards, reusable



Chip Card Reader



Measuring Cable, 2.5 meter  
incl. push-pull connectors from Lemo



Extension Cable, 2.5 meter  
incl. push-pull connectors from Lemo



USB Cable  
1.0 meter



15 Paper Rolls  
for integrated thermal printer

